

# SITxell

Territorial Information System for the network of open areas

A TOOL FOR INTERPRETING  
THE TERRITORY



Diputació  
Barcelona

---

# WHAT IS SITXELL?

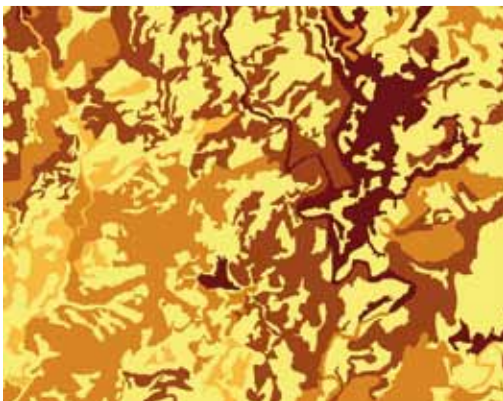
---

Open areas, taken together, form a vitally important system in maintaining ecological and territorial processes. To meet the conservation and organisational challenges of areas of natural and agricultural interest, open spaces must be dealt with based on an overall view of the territory as a system.

SITxell is a free territorial analysis system within everyone's reach, making it possible to study and evaluate the open areas in the province of Barcelona based on the evaluation of their ecological, landscape and socio-economic characteristics.

It is a very useful tool for territorial planning processes on both a municipal and a regional scale.

SITxell is a geographical information system (GIS) drawn up on a 1:50.000 scale. Further information from [www.sitxell.eu](http://www.sitxell.eu)



---

# WHAT ARE THE AIMS OF SITXELL?

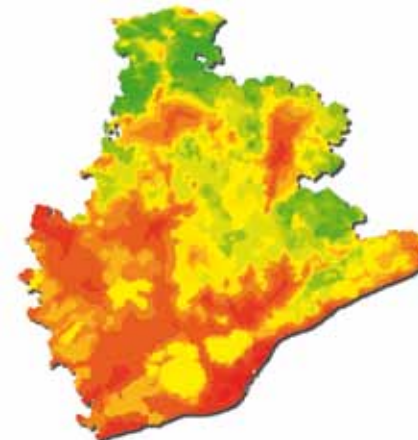
---

SITxell began with the need to know about and publicise the interest of open areas from a multidisciplinary point of view, incorporating their natural, economic and social values.

Its main aims are:

- To provide accurate, reliable, useful information about the ecological and socio-economic values of open areas.
- To be a territorial analysis tool providing support for planning and decision-making about the territory.
- To work on organising and managing the territory in an integrated way.
- To publicise the importance of ecosystems and the benefits and services they provide to society.

Do you want to know about the conceptual framework of SITxell? Go to [www.sitxell.eu](http://www.sitxell.eu)



---

# WHAT CAN BE FOUND AT SITXELL?

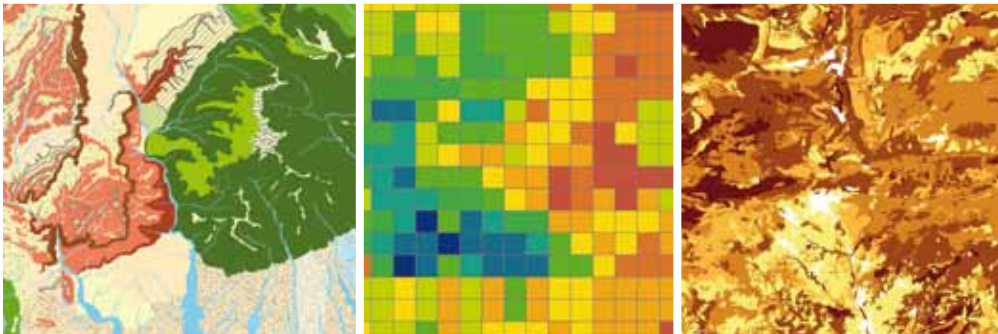
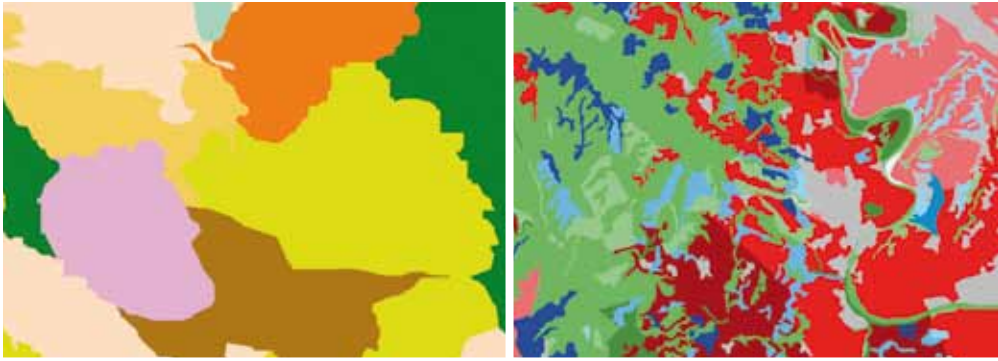
---

The descriptive information about open areas provides a good starting point in terms of knowledge of their ecological, social and economic characteristics.

Based on working with research centres, university departments, sectorial institutions and specialised businesses, SITxell has made it possible to go further and develop cartographical information evaluating open areas in accordance with the criteria and parameters of groups of experts. This makes comparative analysis, evaluation and prioritising easier in territorial planning processes, while identifying and highlighting the areas of greatest interest.

The information provided is entirely compatible with most commonly used cartography, databases and GIS programs. At the same time, SITxell uses a map viewer, making it possible for the information to be consulted by a non-specialised public sensitive to environmental conservation aspects.

Do you want to know how SITxell is structured?  
Go to [www.sitxell.eu](http://www.sitxell.eu) and discover the areas where information is provided.



---

# WHO IS IT AIMED AT?

---

SITxell is designed largely for use in the municipal sphere, but it can also be used on various scales and at different levels of decision-making. Its application provides a good tool both for council officers involved in projects associated with environmental knowledge and evaluation, and for raising public awareness in the conservation sphere.

---

## Municipality

SITxell is a support tool for developing local policies on non-urban land. It is designed for use in both general and specific planning, largely in the following areas:

- Knowledge and best use of open areas.
- Drawing up urban and sectorial planning.
- Positioning concerning external territorial projects.
- Planning and management of areas of local interest.

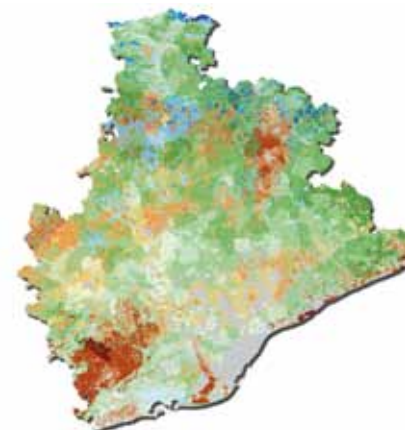
Because of its scale and structure, SITxell can also be used in the same areas at supramunicipal or regional levels.

---

## The public

The information contained in SITxell can be attractive for people interested in natural areas and in the environmental values and benefits they bring us. It is also a source of very useful information for the work of specialists, consultants and other professionals working in the sphere of knowledge of the environment.

Do you want to know how to access SITxell's maps?  
Go to [www.sitxell.eu](http://www.sitxell.eu)



---

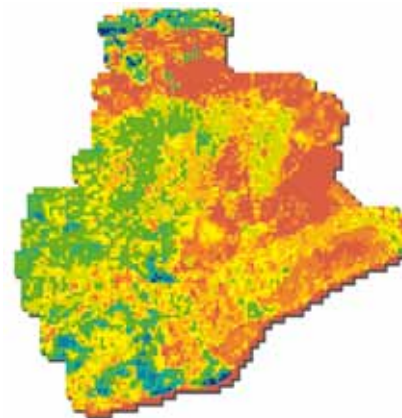
# WHAT ARE THE MAIN USES OF SITXELL?

---



- To find out about the natural and landscape values of a territory.
- To evaluate the dynamism and structure of municipality's open areas, based on territorial diagnosis.
- To obtain an analytical tool to give support to municipalities in defining their spatial land planning.
- To make use of the knowledge accumulated over the years about the territory and analyse it using a specific geographical information system.
- To obtain territorial information to inform the public about the ecological, landscape and socio-economic values of open areas.

Go to [www.sitxell.eu](http://www.sitxell.eu) for further information.



---

Further information at  
**[www.sitxell.eu](http://www.sitxell.eu)**



**Diputació  
Barcelona**

Àrea de Territori i Sostenibilitat

Oficina Tècnica de Planificació i Anàlisi Territorial  
Comte d'Urgell, 187, 08036 Barcelona  
T. 934 022 896  
[ot.territorial@diba.cat](mailto:ot.territorial@diba.cat)  
[info@sitxell.eu](mailto:info@sitxell.eu)



Download this  
publication in PDF  
format

---

First Prize in the  
United Nations  
Public Sector Awards  
(UNPSA 2012)



Finalist in the European  
Public Sector Awards  
(EPSA 2011)

